

0F3SR300K140000 – FKW-S050

KAWASAKI ZX6R SLIPPER CLUTCH KIT

MOUNTING INSTRUCTION

The Drum/Hub group is supplied pre-assembled. **In case of need**, as to check the ramps wear, please see hereinafter the specific procedure to disassemble the Drum/Hub group.

Place the Drum/Hub group on the drive shaft. Eventually, in order to simplify the operation, it is possible to fix the drum (16) onto the hub (18), in an at-rest position, with a M6x1 screw.

WARNING: between the original basket and the hub (18) you must keep the washer of the original clutch, otherwise there could be generated wrong function and/or damage to the clutch parts.

Replace the original clutch plates, keeping them in the original sequence. At the end of the operation the total height of the stack must be 40,1 mm ± 0.3mm.

WARNING: if in the original plates kit there are two rings (one of them is conical), placed in between sinterized plates keep them apart and do NOT use them in the STM clutch.

Remove the M6x1 screw, if you used it for the last operation.

Check that the drum stopper lock screw (14) do not stick out from the surface of the drum stopper (15), where the spring stopper plate (6) will be placed.

Verify that the secondary spring support (13) is correctly placed in its seat in the drum (16). Place the secondary spring (12) in the drum (16) with a small amount of grease.

Check that the primary spring support (10) is correctly placed in its seat in the pressure plate (11). Place the pressure plate (11) in its seats on the drum (16).

Place the Evoluzione primary spring (9) on the pressure plate (11).

Pre-assemble the spring stopper group: keep the spring stopper plate (8) with the groove for the bearing facing up as shown in the drawing, place the ball bearings (7) and then place the spring stopper hub (6).

Insert the spring stopper group into the pressure plate (11) so that the 9 wings of the spring pusher plate (8) overlap the 9 tips of the spring (9).

Insert the notched washer (5) with the convex part facing up and then the nut (4) in the spring stopper hub (6).

Tighten the nut (4) onto the drive shaft, provided with the clutch and lock it with a dynamometric wrench to the torque suggested by the manufacturer. To lock the pressure plate (11) we suggest to use the specific tool (UTL-0030) (not included).

Pre-assemble the bearing rest group: mount the clutch pushrod piece and the bearing of the original clutch into the bearing rest (3).

Place the entire bearing rest into the specific holes in the pressure plate (11) taking care of placing it correctly in these holes and fix it with the six screws (1) and with the notched washers (2).

Once the mounting operations are completed, operate the clutch lever more than once to check that pressure plate correctly activate the clutch opening and closing, then mount the clutch guard.

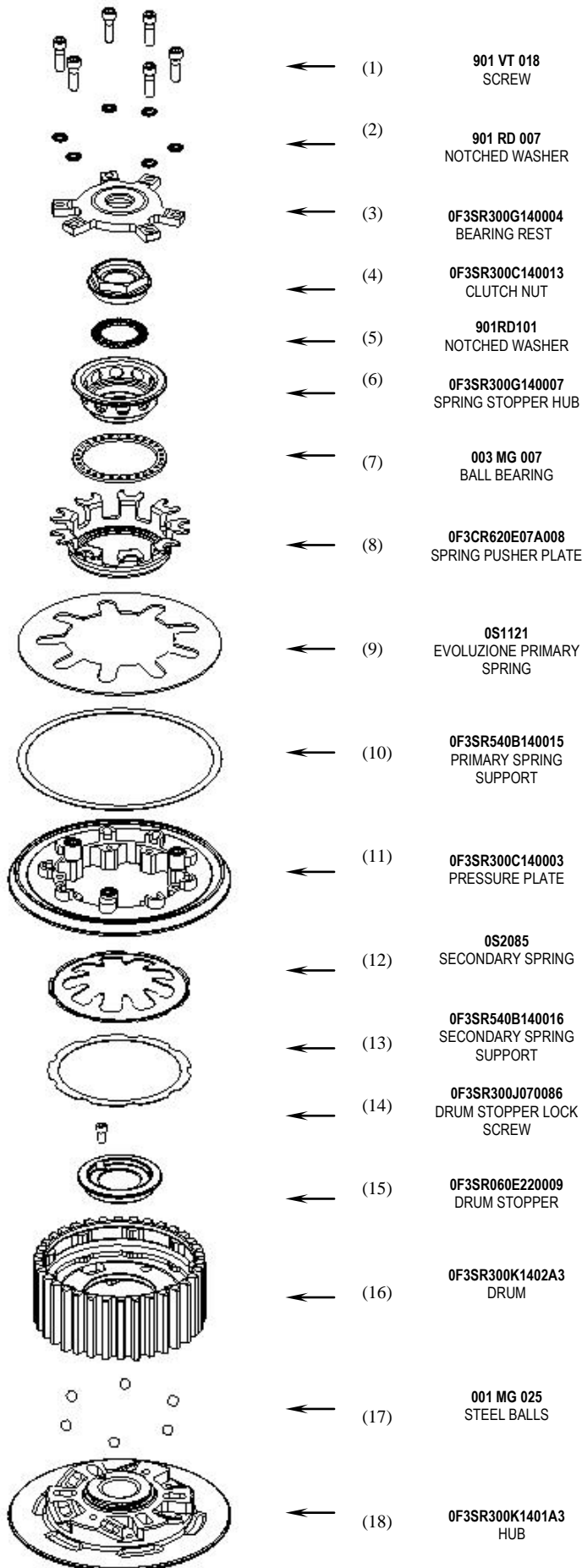
DRUM/HUB UN-INSTALL PROCEDURE

ATTENTION: DO NOT perform this operation before removing the clutch from the bike. Remove the drum stopper lock screw (14), rotate the drum stopper hub (15) clockwise by 60° and then remove it. The drum (16), the hub (18) and the steel balls (17) can now be disassembled.

TO RE-ASSEMBLE THE GROUP: place the 6 steel balls (17) at the bottom of the grooves of the hub (18) using a small amount of grease, then position the drum (14) onto the hub (18) in an at-rest position. Position the drum stopper hub (15) on the hub (18), aligning its three wings with the three housings on the hub (18), then rotate it until the holes of the two parts are aligned, and finally replace completely the screw (15). **Check that the drum stopper (15) is correctly locked on the hub (18) and that the drum stopper lock screw (14) do not stick out from the surface where the spring stopper hub (15) will be placed.**

GENERAL SAFETY REGULATIONS

- IN THIS SHEET ARE REPORTED THE DIRECTIONS TO PERFORM CORRECTLY THE CLUTCH ASSEMBLY OPERATIONS.
- STM RESERVES THE RIGHT, WITHOUT NOTICE, TO INTRODUCE ANY TECHNICAL CHANGE WHENEVER DEEMED IT TO BE NECESSARY TO IMPROVE FUNCTION AND QUALITY OF THE PRODUCTS.
- ASSEMBLY OPERATIONS MUST BE PERFORMED BY A SKILLED TECHNICIAN AND MUST BE SCRUPULOUSLY OBSERVED.
- BEFORE MOUNTING THE CLUTCH MAKE A COMPLETE INSPECTION OF THE MOTORBIKE COMPONENTS, IN ORDER TO VERIFY THE POSSIBLE PRESENCE OF FAULTS OR ANOMALIES ON THE VEHICLE.
- MAKE SURE THAT THERE ARE NO MISSING/DAMAGED PARTS IN THE CLUTCH KIT.
- SOME PARTS OF THE CLUTCH AND ITS COMPONENTS CAN HAVE SHARP SURFACE: HANDLE WITH CARE.
- SOME COMPONENTS OF THE CLUTCH, BECAUSE OF THEIR SMALL DIMENSIONS CAN BE SWALLOWED: KEEP AWAY FROM CHILDREN.



- (1) 901 VT 018 SCREW
- (2) 901 RD 007 NOTCHED WASHER
- (3) 0F3SR300G140004 BEARING REST
- (4) 0F3SR300C140013 CLUTCH NUT
- (5) 901RD101 NOTCHED WASHER
- (6) 0F3SR300G140007 SPRING STOPPER HUB
- (7) 003 MG 007 BALL BEARING
- (8) 0F3CR620E07A008 SPRING PUSHER PLATE
- (9) 0S1121 EVOLUZIONE PRIMARY SPRING
- (10) 0F3SR540B140015 PRIMARY SPRING SUPPORT
- (11) 0F3SR300C140003 PRESSURE PLATE
- (12) 0S2085 SECONDARY SPRING
- (13) 0F3SR540B140016 SECONDARY SPRING SUPPORT
- (14) 0F3SR300J070086 DRUM STOPPER LOCK SCREW
- (15) 0F3SR060E220009 DRUM STOPPER
- (16) 0F3SR300K1402A3 DRUM
- (17) 001 MG 025 STEEL BALLS
- (18) 0F3SR300K1401A3 HUB