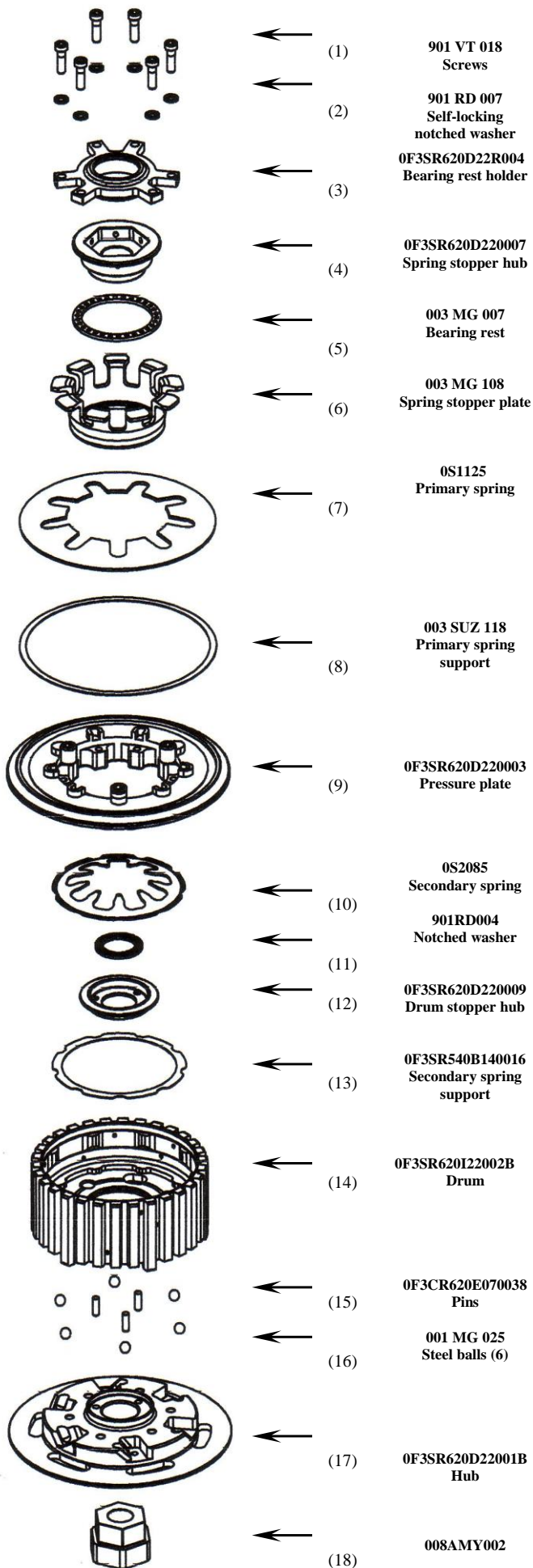


0F3SR620P220000

FYA-S140

EVOLUZIONE YAMAHA R1-2009
SLIPPER CLUTCH

ASSEMBLING INSTRUCTIONS



Assemble the hub kit:

place steel balls (16), into hub sites (17), with some grease.
Fix with a M6x1 screw drum (14) on hub (17) in rest position.
Insert hub kit into main shaft.

Install original plates.

Total thickness of plates kit must be 43±0.2mm.

N.B: Attention, if in original plates kit there are two rings, they should not be assembled into plates kit.

Take the previously assembled screw off.

Put with some grease the drum stopper hub(12) on hub (17) .

Insert toothed washer (11) into the upper part of drum stopper hub (12), with the shaped part facing up, taking care to align the three holes with the three pins (15) inserted in the hub (17).

Insert the secondary spring support (13) into the drum (14) housing.

Assemble secondary spring (10) in its seat, into the drum (14), with some grease.

Insert pusher plate (9) into drum seats (14), then insert Evoluzione racing spring (7) into the pusher plate (9).

Insert pusher spring plate (6) into the spring previously assembled keeping it with the bearing rest guide (dished part) facing up as shown making the 9 small wings cross the spring 9 legs (7); insert bearing rest (5) and spring stopper hub (4) .

Screw spring stopper hub on primary shaft locking with the dynamometric key to the couple suggested by the manufacturer. Use the special tool (18), included. To block the pressure plate (9) we suggest to use the specific tool (UTL-0030) not supplied with the clutch.

Assemble bearing rest completely: assemble bearing rest and original rod into the seat of bearing rest holder (3).

Place the bearing rest holder (3) into its seat on pusher plate (9), inserting it correctly into its grooves, insert 6 M5 anti-screwing toothed washers (2) into the 6 screws (1), and lock them.

NB: once assembled, assemble the clutch cover and , pull and release the clutch lever, check that pressure plate performs correctly opening and closing movements.

GENERAL SAFETY REGULATIONS

- IN THIS SHEET ARE REPORTED THE DIRECTIONS TO PERFORM CORRECTLY THE CLUTCH ASSEMBLY OPERATIONS.
- STM RESERVES THE RIGHT, WITHOUT NOTICE, TO INTRODUCE ANY TECHNICAL CHANGE WHENEVER DEEMED IT TO BE NECESSARY TO IMPROVE FUNCTION AND QUALITY OF THE PRODUCTS.
- ASSEMBLY OPERATIONS MUST BE PERFORMED BY A SKILLED TECHNICIAN AND MUST BE SCRUPULOUSLY OBSERVED.
- BEFORE MOUNTING THE CLUTCH MAKE A COMPLETE INSPECTION OF THE MOTORBIKE COMPONENTS, IN ORDER TO VERIFY THE POSSIBLE PRESENCE OF FAULTS OR ANOMALIES ON THE VEHICLE.
- MAKE SURE THAT THERE ARE NO MISSING/DAMAGED PARTS IN THE CLUTCH KIT.
- STM ITALY SRL PRODUCTS ARE EXCLUSIVELY INTENDED FOR COMPETITION ON TRACKS, NOT SUITABLE ON MOTORBIKES ON PUBLIC ROADS.
- SOME PARTS OF THE CLUTCH AND ITS COMPONENTS CAN HAVE SHARP SURFACE: HANDLE WITH CARE.
- SOME COMPONENTS OF THE CLUTCH, BECAUSE OF THEIR SMALL DIMENSIONS CAN BE SWALLOWED: KEEP AWAY FROM CHILDREN.

