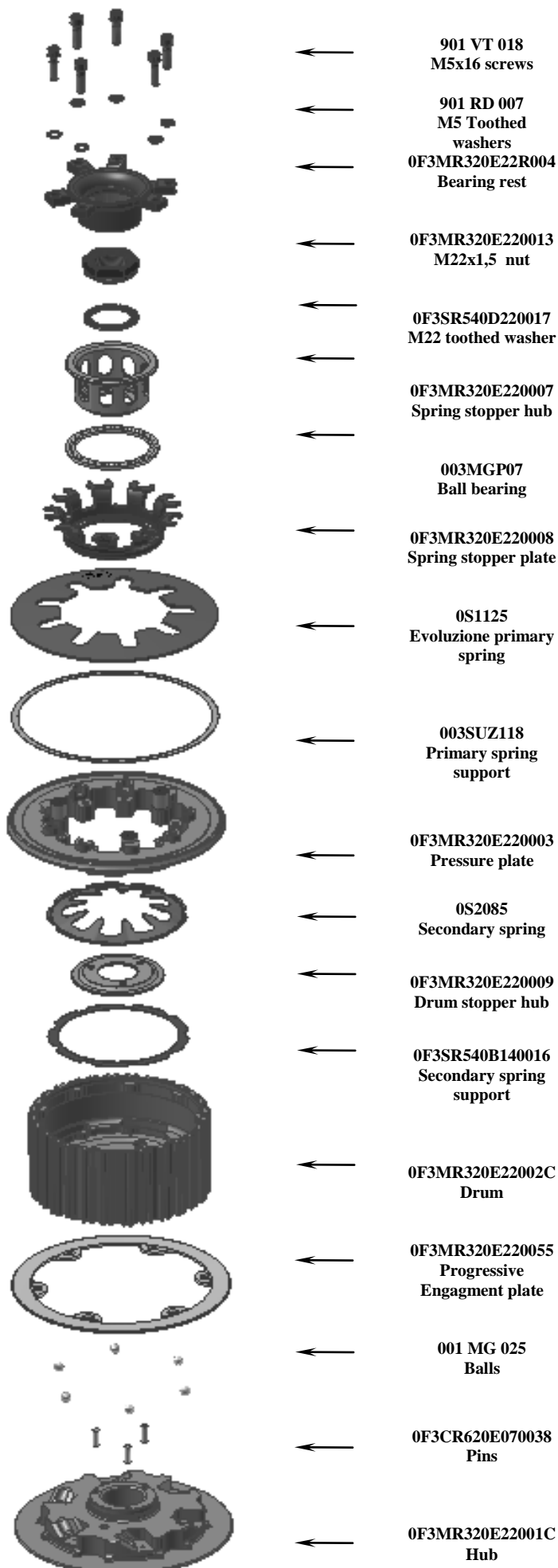


# 0F3MR320E220000

## KTM LC8 SLIPPER CLUTCH KIT

### ASSEMBLY INSTRUCTIONS



901 VT 018  
M5x16 screws

901 RD 007  
M5 Toothed  
washers  
0F3MR320E22R004  
Bearing rest

0F3MR320E220013  
M22x1,5 nut

0F3SR540D220017  
M22 toothed washer

0F3MR320E220007  
Spring stopper hub

003MGP07  
Ball bearing

0F3MR320E220008  
Spring stopper plate

0S1125  
Evoluzione primary  
spring

003SUZ118  
Primary spring  
support

0F3MR320E220003  
Pressure plate

0S2085  
Secondary spring

0F3MR320E220009  
Drum stopper hub

0F3SR540B140016  
Secondary spring  
support

0F3MR320E22002C  
Drum

0F3MR320E220055  
Progressive  
Engagement plate

001 MG 025  
Balls

0F3CR620E070038  
Pins

0F3MR320E22001C  
Hub

- Pre-assemble the hub pack: place the 6 steel balls (001MG025) at the bottom of the grooves of the hub (0F3MR320E22001C) using a small amount of grease then fix the drum (0F3MR320E22002C) onto the hub (0F3MR320E22001C) with an M6x1 screw in an at-rest position.
- Insert the hub pack onto the main shaft.
- Reinstall the original clutch plates. The total thickness of the pack must be 50,6mm (+0,2mm -0,2mm).
- ATTENTION: remove the two little rings there are in the original plates pack.**
- Remove the previously mounted screw.
- Position the drum stopper hub (0F3MR320E220009) on the hub (0F3MR320E22001C) with a small quantity of grease taking care to align the three holes with the three pins (0F3CR620E070038) inserted in the hub (0F3MR320E22001C). Then check that the pins (0F3CR620E070038) do not stick out from the surface where the spring stopper hub (0F3MR320E220007) will be placed.
- Verify that the secondary spring support (0F3SR540B140016) is well inserted in the drum (0F3MR320E22002C) seat.
- Place the secondary spring (0S2085) in the drum (0F3MR320E22002C) housing with a small amount of grease.
- Verify that the primary spring support (003SUZ118) is well inserted in the pressure plate (0F3MR320E220003) seat.
- Insert the pressure plate (0F3MR320E220003) in the drum (0F3MR320E220003).
- Insert the Evoluzione primary spring (0S1125) in the pressure plate (0F3MR320E220003) housing.
- Pre-assemble the spring stopper group: keep the spring stopper plate (0F3MR320E220008) with the groove for the bearing facing up as illustrated, insert the ball bearing (003MGP07) and then the spring stopper hub (0F3MR320E220007).
- Insert the spring stopper group into the pressure plate (0F3MR320E220003) making the 9 wings of the spring stopper plate (0F3MR320E220008) overlap the 9 spring (0S1125) tips.
- Insert the notched washer (0F3SR540D220017) with the convex part facing up and then the nut (0F3MR320E220013) in the spring stopper hub (0F3MR320E220007).
- Screw the nut (0F3MR320E220013) onto the drive shaft, locking with the dynamometric key to the torque suggested by the manufacturer.
- To block the pressure plate (0F3MR320E220003) we suggest to use the specific tool (002AMS001) not supplied with the clutch.
- Pre-assemble the complete bearing rest: mount the clutch pushrod piece and the bearing of the original clutch into the bearing rest (0F3MR320E22R004) housing.
- Position the complete bearing rest (0F3MR320E22R004) into the relevant opening of the pressure plate (0F3MR320E220003) taking care to correctly place it in the openings and fix it with the six screws (901VT018) and with the toothed washers (901RD007).

**Once the assembly is completed, repeatedly operate the clutch lever to check that pressure plate correctly performs the opening and closing movements, then mount the clutch guard.**

#### GENERAL SAFETY REGULATIONS

- IN THIS SHEET ARE REPORTED THE DIRECTIONS TO PERFORM CORRECTLY THE CLUTCH ASSEMBLY OPERATIONS.
- STM RESERVES THE RIGHT, WITHOUT NOTICE, TO INTRODUCE ANY TECHNICAL CHANGE WHENEVER DEEMED IT TO BE NECESSARY TO IMPROVE FUNCTION AND QUALITY OF THE PRODUCTS.
- ASSEMBLY OPERATIONS MUST BE PERFORMED BY A SKILLED TECHNICIAN AND MUST BE SCRUPULOUSLY OBSERVED.
- BEFORE MOUNTING THE CLUTCH MAKE A COMPLETE INSPECTION OF THE MOTORBIKE COMPONENTS, IN ORDER TO VERIFY THE POSSIBLE PRESENCE OF FAULTS OR ANOMALIES ON THE VEHICLE.
- MAKE SURE THAT THERE ARE NO MISSING/DAMAGED PARTS IN THE CLUTCH KIT.
- SOME PARTS OF THE CLUTCH AND ITS COMPONENTS CAN HAVE SHARP SURFACE: HANDLE WITH CARE.
- SOME COMPONENTS OF THE CLUTCH, BECAUSE OF THEIR SMALL DIMENSIONS CAN BE SWALLOWED: KEEP AWAY FROM CHILDREN.

