

0F3SR620C140000

FYA-S070

EVOLUZIONE YAMAHA R6 CLUTCH KIT

ASSEMBLY INSTRUCTIONS

-Hub kit assembly:

put 6 spheres (001MG025), into hub grooves (0F3SR620C14001C), with some grease.

Fix with a M6x1 screw drum (0F3SR620C14002C) on hub (0F3SR620C14001C) in rest position.

-Insert hub kit on primary shaft.

ATTENTION:

INSTALL THE ORIGINAL PLATES PACK FOLLOWING THE CONFIGURATION IN THE OTHER SHEET.

Total thickness should be 40,3mm.

Attention! If in plates kit there are two rings, do not insert them into it absolutely.

-take the screw previously assembled off

-put the drum stopper hub (0F3SR540B140009) with some grease on hub (0F3SR540B14001C).

-Insert toothed washer (901RD006) in the upper part of drum stopper hub (0F3SR540B140009), with the convex part facing up.

-Assemble the secondary spring (0F3SR540B140006) into its seat into the drum (0F3SR540B14002C), with some grease.

-Insert pusher plate (0F3SR540B140003) into drum seats (0F3SR540B14002C), in pusher plate (0F3SR540B140003); insert Racing Evoluzione spring (003SUZ119).

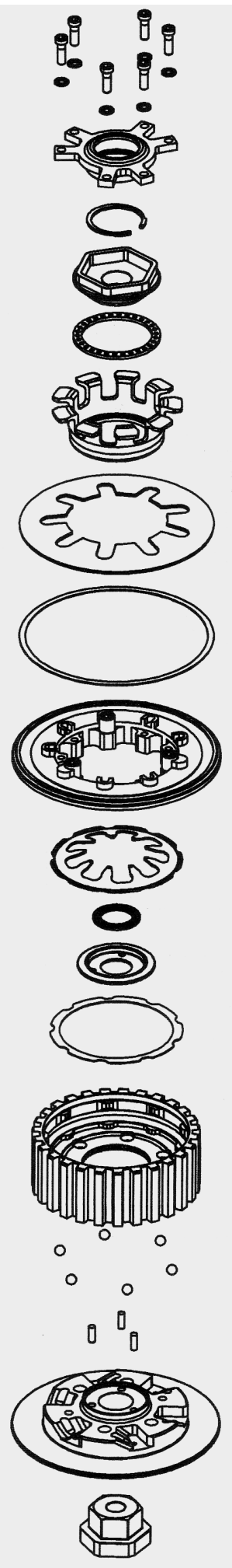
- Insert the pusher spring plate (003MG108) into the previously assembled spring keeping it with the shaped part of the bearing rest facing up as shown. Be careful that the 9 wings cross the spring 9 legs (0F3SR540B14005C); insert ball bearing (003MG007) and finally spring stopper hub (0F3SR540B140007).

-Screw spring stopper hub locking with the dynamometric key to the torque as suggested by the manufacturer. Use the assembling tool (008AMY003), included.

Assemble bearing rest and original bearing pin holder into bearing rest holder seat (0F3SR540B14R004).

-Put bearing rest holder (0F3SR540B14R004) into its seat on pusher plate (0F3SR540B140003), insert 6 M5 anti-screwing toothed washers (901RD007) into 6 screws (901VT018), apply some grease on screws and lock.

NB: once completed assembly, operate again and again the clutch lever, check that pusher plate performs opening and closing movements correctly.



- ← 901 VT 018
Screws
- ← 901 RD 007
Anti-screwing
toothed washer
- ← 0F3SR620C14R004
Bearing rest holder
- ← 901SE008
Seeger
- ← 0F3SR620C140007
Spring stopper hub
- ← 003 MG 007
Ball bearing
- ← 003 MG 108
Spring stopper plate
- ← 003 SUZ 119
Evoluzione Racing
spring
- ← 003SUZ118
Primary spring
support
- ← 0F3SR620C140003
Pusher plate
- ← 0F3SR540B140006
Secondary spring
- ← 901 RD 006
Toothed washer
- ← 0F3SR620C140009
Drum stopper hub
- ← 0F3SR540B140015
Secondary spring
support
- ← 0F3SR620C14002C
Drum
- ← 001 MG 025
Spheres (6)
- ← 0F3CR620E070038
Pins
- ← 0F3SR620C14001C
Hub
- ← 008AMY003
Tool

GENERAL SAFETY REGULATIONS

- IN THIS SHEET ARE REPORTED THE DIRECTIONS TO PERFORM CORRECTLY THE CLUTCH ASSEMBLY OPERATIONS.
- STM RESERVES THE RIGHT, WITHOUT NOTICE, TO INTRODUCE ANY TECHNICAL CHANGE WHENEVER DEEMED IT TO BE NECESSARY TO IMPROVE FUNCTION AND QUALITY OF THE PRODUCTS.
- ASSEMBLY OPERATIONS MUST BE PERFORMED BY A SKILLED TECHNICIAN AND MUST BE SCRUPULOUSLY OBSERVED.
- BEFORE MOUNTING THE CLUTCH MAKE A COMPLETE INSPECTION OF THE MOTORBIKE COMPONENTS, IN ORDER TO VERIFY THE POSSIBLE PRESENCE OF FAULTS OR ANOMALIES ON THE VEHICLE.
- STM ITALY SRL PRODUCTS ARE EXCLUSIVELY INTENDED FOR COMPETITION, NOT SUITABLE ON MOTORBIKES ON PUBLIC ROADS.
- MAKE SURE THAT THERE ARE NO MISSING/DAMAGED PARTS IN THE CLUTCH KIT.
- SOME PARTS OF THE CLUTCH AND ITS COMPONENTS CAN HAVE SHARP SURFACE: HANDLE WITH CARE.
- SOME COMPONENTS OF THE CLUTCH, BECAUSE OF THEIR SMALL DIMENSIONS CAN BE SWALLOWED: KEEP AWAY FROM CHILDREN.

