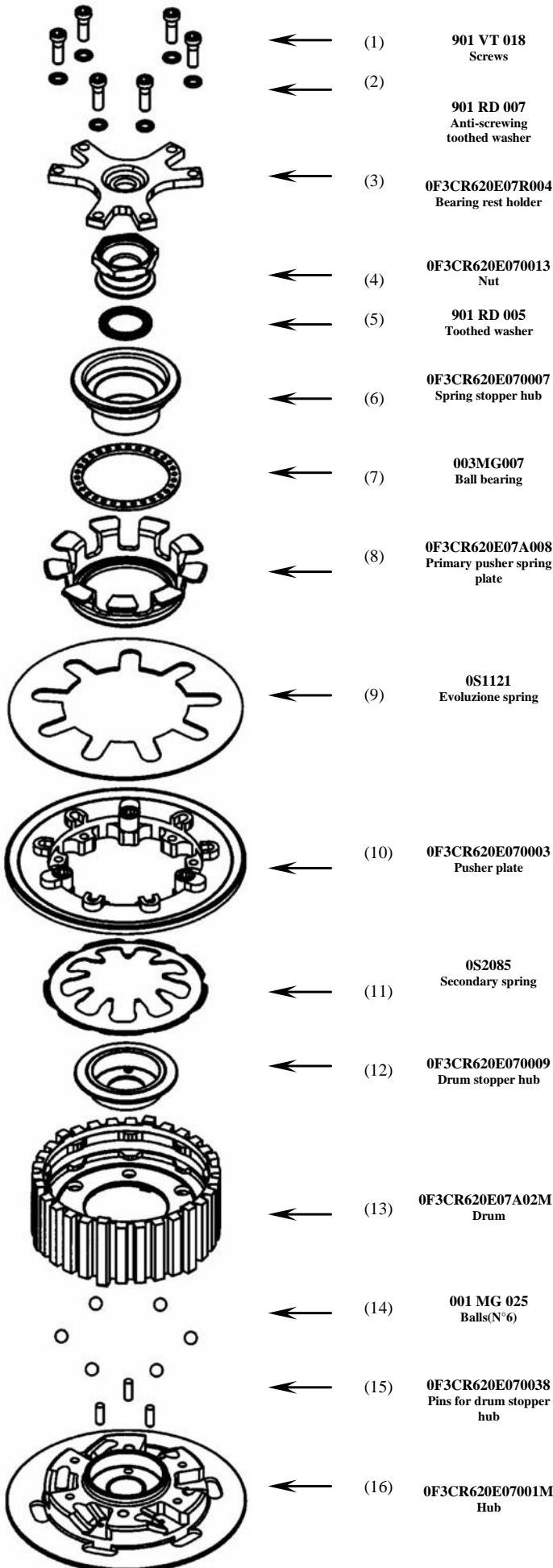


ASSEMBLY DIRECTIONS



Perform the assembly starting of the hub kit: put the 6 steel balls (14) at the bottom of the grooves using a little bit of grease. Fix the clutch drum (13) on the clutch hub (16) at rest position using an ordinary screw.

Be sure that the spacer of the original clutch is in position on the basket, then insert the hub kit previously mounted on the drive shaft.

ATTENTION: Verify, by manually rotating the hub, that the hub itself doesn't scrape against the basket.

Replace the original clutch plates. The total thickness of the plates should be 36,7 mm.

N.B: If in the original plates kit there are two rings, they must be absolutely removed!

Remove the ordinary screw from the hub.

Put the drum stopper hub (12) with some grease on hub (16) so as to insert the 3 pins (15) inside the hub (16) into the three holes of the drum stopper hub (12).

Assemble the secondary spring (11) into its seat inside the drum (13), with some grease.

Insert the pusher plate (10) into the seats on the drum (13). Then insert the primary spring (9) into the pusher plate (10).

Insert in sequence into Evoluzione spring (9): the pusher spring plate (10) with the shaped part facing up as shown in the picture, the ball bearing (7) and the spring stopper hub (6), the dished spring washer (5) with the convex side facing up, and finally the nut (4). Line up the legs of the pusher spring plate (8) with the spring legs (9). Be careful that the wings cross the spring legs (9).

Then tighten the nut on the drive shaft using the dynamometric tool to the torque suggested by the manufacturer. Use the specific tool UTL-0030 (not included in the box) in order to hold pusher plate (10) while tightening.

Replace the clutch pusher of the original clutch on the drive shaft, then put the bearing rest (3), into the seat of the pusher plate (10), paying attention to insert it correctly into the grooves.

insert 6 M5 anti-screwing toothed washers (2) into 6 screws (1), apply some grease on screws and lock as suggested by manufacturer.

NB: once completed assembly, operate again and again the clutch lever, check that pusher plate performs opening and closing movements correctly.

GENERAL SAFETY REGULATIONS

- IN THIS SHEET ARE REPORTED THE DIRECTIONS TO PERFORM CORRECTLY THE CLUTCH ASSEMBLY OPERATIONS.
- STM RESERVES THE RIGHT, WITHOUT NOTICE, TO INTRODUCE ANY TECHNICAL CHANGE WHENEVER DEEMED IT TO BE NECESSARY TO IMPROVE FUNCTION AND QUALITY OF THE PRODUCTS.
- ASSEMBLY OPERATIONS MUST BE PERFORMED BY A SKILLED TECHNICIAN AND MUST BE SCRUPULOUSLY OBSERVED.
- BEFORE MOUNTING THE CLUTCH MAKE A COMPLETE INSPECTION OF THE MOTORBIKE COMPONENTS, IN ORDER TO VERIFY THE POSSIBLE PRESENCE OF FAULTS OR ANOMALIES ON THE VEHICLE.
- MAKE SURE THAT THERE ARE NO MISSING/DAMAGED PARTS IN THE CLUTCH KIT.
- SOME PARTS OF THE CLUTCH AND ITS COMPONENTS CAN HAVE SHARP SURFACE: HANDLE WITH CARE.
- SOME COMPONENTS OF THE CLUTCH, BECAUSE OF THEIR SMALL DIMENSIONS CAN BE SWALLOWED; KEEP AWAY FROM CHILDREN.

