

0F3SR210A26000D FHD-S020

SLIPPER CLUTCH KIT FOR HARLEY DAVIDSON

INSTALLATION INSTRUCTIONS

The Drum/Hub group is supplied pre-assembled. **In case of need**, as to check the ramps wear, please see hereinafter the specific procedure to disassemble the Drum/Hub group.

Place the Drum/Hub group on the drive shaft.

Introduce the equipment clutch plates, as shown in the "SHEET A" attached. **At the end of the operation the total height of the stack must be 36,7mm ± 0,2mm.**

Check that the drum stopper lock screw (13) do not stick out from the surface of the drum stopper (14), where the spring stopper plate (6) will be placed.

Verify that the secondary spring support (15) is well inserted in the drum (16) seat.

Place the secondary spring (12) in the drum (16) housing with a small amount of grease.

Verify that the primary spring support (10) is well inserted in the pressure plate (11) seat.

Insert the pressure plate (11) in the drum (16).

Insert the primary spring (9) in the pressure plate (11) housing.

Pre-assemble the spring stopper group: keep the spring stopper plate (8) with the groove for the bearing facing up as illustrated, insert the ball bearing (7) and then the spring stopper hub (6).

Insert the spring stopper group into the pressure plate (11) making the 9 wings of the spring stopper plate (8) overlap the 9 spring (9) tips.

Insert the toothed washer (5) with the convex part facing up and then the nut (4) in the spring stopper hub (6).

Screw the nut (4) onto the drive shaft, locking with the dynamometric wrench to the torque suggested by the manufacturer.

To screw the nut (4) use tool (19) listed in this sheet, we suggest to use the specific tool (UTL-0030), not supplied with the clutch, to block the pressure plate (11).

Pre-assemble the complete bearing rest: mount the clutch pushrod piece and the bearing of the original clutch into the bearing rest (3) housing.

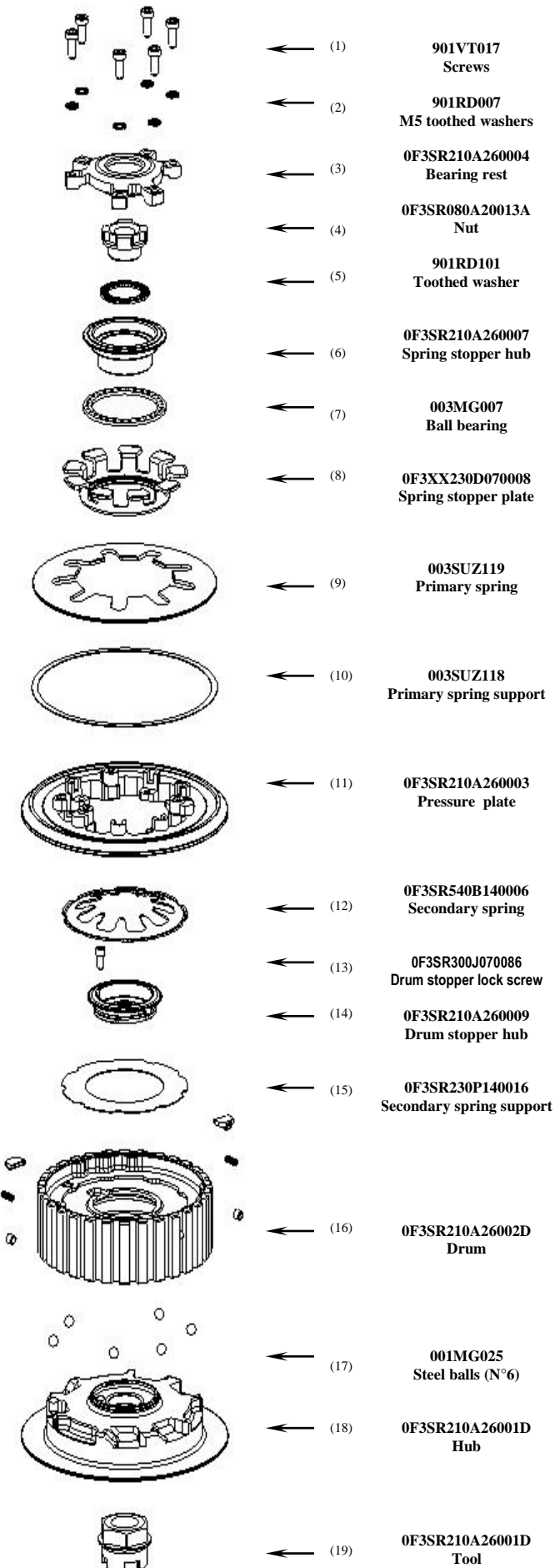
Position the complete bearing rest (3) into the relevant opening of the pressure plate (11) taking care to correctly place it in the openings and fix it with the six screws (1) and with the toothed washers (2).

Once the assembly is completed, repeatedly operate the clutch lever to check that pressure plate correctly performs the opening and closing movements, then mount the clutch guard.

DRUM/HUB UN-INSTALL PROCEDURE

ATTENTION: DO NOT perform this operation before removing the clutch from the bike. Remove the drum stopper lock screw (13), rotate the drum stopper hub (14) clockwise by 60° and then remove it. The drum (16), the hub (18) and the steel balls (17) can now be disassembled.

TO RE-ASSEMBLE THE GROUP: place the 6 steel balls (17) at the bottom of the grooves of the hub (18) using a small amount of grease, then position the drum (16) onto the hub (18) in an at-rest position. Position the drum stopper hub (14) on the hub (18), aligning its three wings with the three housings on the hub (18), then rotate it until the holes of the two parts are aligned, and finally replace completely the screw (13). **Check that the drum stopper (14) is correctly locked on the hub (18) and that the drum stopper lock screw (13) do not stick out from the surface where the spring stopper hub (6) will be placed.**



- ← (1) 901VT017
Screws
- ← (2) 901RD007
M5 toothed washers
- ← (3) 0F3SR210A260004
Bearing rest
- ← (4) 0F3SR080A20013A
Nut
- ← (5) 901RD101
Toothed washer
- ← (6) 0F3SR210A260007
Spring stopper hub
- ← (7) 003MG007
Ball bearing
- ← (8) 0F3XX230D070008
Spring stopper plate
- ← (9) 003SUZ119
Primary spring
- ← (10) 003SUZ118
Primary spring support
- ← (11) 0F3SR210A260003
Pressure plate
- ← (12) 0F3SR540B140006
Secondary spring
- ← (13) 0F3SR300J070086
Drum stopper lock screw
- ← (14) 0F3SR210A260009
Drum stopper hub
- ← (15) 0F3SR230P140016
Secondary spring support
- ← (16) 0F3SR210A260002D
Drum
- ← (17) 001MG025
Steel balls (N°6)
- ← (18) 0F3SR210A26001D
Hub
- ← (19) 0F3SR210A26001D
Tool

GENERAL SAFETY REGULATIONS

- IN THIS SHEET ARE REPORTED THE DIRECTIONS TO PERFORM CORRECTLY THE CLUTCH ASSEMBLY OPERATIONS.
- STM RESERVES THE RIGHT, WITHOUT NOTICE, TO INTRODUCE ANY TECHNICAL CHANGE WHENEVER DEEMED IT TO BE NECESSARY TO IMPROVE FUNCTION AND QUALITY OF THE PRODUCTS.
- ASSEMBLY OPERATIONS MUST BE PERFORMED BY A SKILLED TECHNICIAN AND MUST BE SCRUPULOUSLY OBSERVED.
- BEFORE MOUNTING THE CLUTCH MAKE A COMPLETE INSPECTION OF THE MOTORBIKE COMPONENTS, IN ORDER TO VERIFY THE POSSIBLE PRESENCE OF FAULTS OR ANOMALIES ON THE VEHICLE.
- MAKE SURE THAT THERE ARE NO MISSING/DAMAGED PARTS IN THE CLUTCH KIT.
- SOME PARTS OF THE CLUTCH AND ITS COMPONENTS CAN HAVE SHARP SURFACE: HANDLE WITH CARE.
- SOME COMPONENTS OF THE CLUTCH, BECAUSE OF THEIR SMALL DIMENSIONS CAN BE SWALLOWED: KEEP AWAY FROM CHILDREN.

