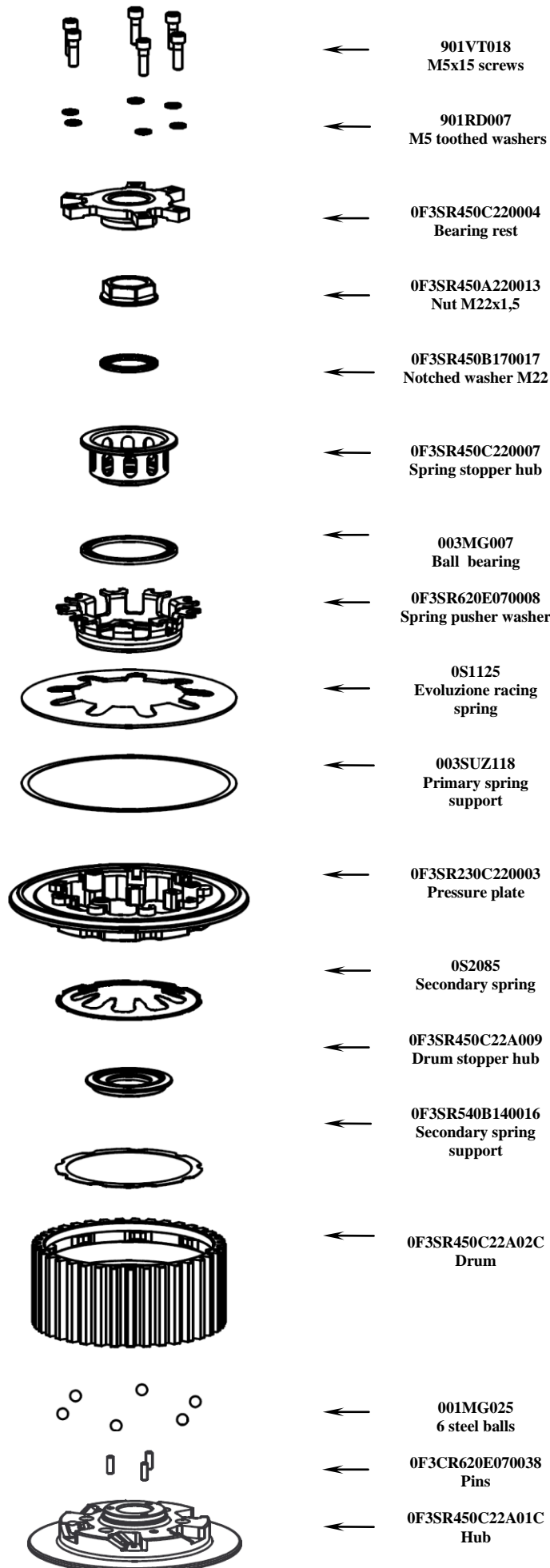


0F3SR450C220000

FMV S020

SLIPPER CLUTCH KIT FOR MV AGUSTA BRUTALE 910

ASSEMBLY INSTRUCTIONS



- Pre-assemble the hub pack: take the hub (0F3SR450C22A01C) and place at the bottom of the grooves the 6 steel balls (001MG025) using a small amount of grease. With an M6 screw fix the clutch drum (0F3SR450C22A02C) onto the clutch hub (0F3SR450C22A01C) in an at-rest position.
 - Insert the hub pack onto the main shaft.
 - Replace the original clutch plates. **NOTE: DO NOT insert the two rings (one flat and one concave) to be found in the original disc pack.** The total thickness of the plates should be $48 \pm 0,3$ mm.
 - Remove the screw used to hold hub (0F3SR450C22A01C) and drum (0F3SR450C22A02C) together.
 - Position the drum stopper hub (0F3SR450C22A009) on the hub (0F3SR450C22A01C) with a small quantity of grease taking care to align the three holes with the three pins (0F3CR620E070038) inserted in the hub (0F3SR450C22A01C). Then check that the pins (0F3CR620E070038) do not stick out from the surface where the spring stopper hub (0F3SR450C220007) will be placed.
 - Verify that the secondary spring support (0F3SR540B140016) is well inserted into its own housing inside the drum (0F3SR450C22A02C).
 - Insert the secondary spring (0S2085) in its seat into the drum (0F3SR450C22A02C) with some grease.
 - Verify that the primary spring support (003SUZ118) is well inserted in its own housing inside the pressure plate (0F3SR230C220003)
 - Insert the Evoluzione Racing spring (0S1125) into the pressure plate (0F3SR230C220003).
 - In order, assemble the complete spring stopper kit starting from the spring stopper washer (0F3SR620E070008) with the shaped part facing up as shown in the picture. Insert the load bearing (003MG007) and the spring stopper hub (0F3SR450C220007).
 - Finally, place the complete spring stopper pack inside the Evoluzione racing spring (0S1125) beforehand mounted onto the pressure plate (0F3SR230C220003). At this point insert the pressure plate (0F3SR230C220003) on the drum (0F3SR450C22A02C).
 - Insert the notched washer (0F3SR450B220017) in the relevant opening placed on the upper part of the spring stopper hub (0F3SR450C220007), with the convex part facing up, then insert and screw the nut (0F3SR450A220013). Lock with the dynamometric key to the torque suggested by the manufacturer.
 - Assemble the complete bearing rest: fit in the bearing rest (0F3SR450C220004) the original bearing.
 - Position the bearing rest (0F3SR450C220004) into the relevant opening of the pressure plate (0F3SR230C220003) taking care to correctly align the openings and fix it with the six screws (901VT018) and with the toothed washers (901RD007).
- NB: once the assembly is complete, repeatedly operate the clutch lever to check that pressure plate correctly performs the opening and closing movements.**

GENERAL SAFETY REGULATIONS

- IN THIS SHEET ARE REPORTED THE DIRECTIONS TO PERFORM CORRECTLY THE CLUTCH ASSEMBLY OPERATIONS.
- STM RESERVES THE RIGHT, WITHOUT NOTICE, TO INTRODUCE ANY TECHNICAL CHANGE WHENEVER DEEMED IT TO BE NECESSARY TO IMPROVE FUNCTION AND QUALITY OF THE PRODUCTS.
- ASSEMBLY OPERATIONS MUST BE PERFORMED BY A SKILLED TECHNICIAN AND MUST BE SCRUPULOUSLY OBSERVED.
- BEFORE MOUNTING THE CLUTCH MAKE A COMPLETE INSPECTION OF THE MOTORBIKE
- STM ITALY SRL PRODUCTS ARE EXCLUSIVELY INTENDED FOR COMPETITION ON TRACKS, NOT SUITABLE ON MOTORBYKES ON PUBLIC ROADS.
- COMPONENTS, IN ORDER TO VERIFY THE POSSIBLE PRESENCE OF FAULTS OR ANOMALIES ON THE VEHICLE.
- MAKE SURE THAT THERE ARE NO MISSING/DAMAGED PARTS IN THE CLUTCH KIT.
- SOME PARTS OF THE CLUTCH AND ITS COMPONENTS CAN HAVE SHARP SURFACE: HANDLE WITH CARE.
- SOME COMPONENTS OF THE CLUTCH, BECAUSE OF THEIR SMALL DIMENSIONS CAN BE SWALLOWED: KEEP AWAY FROM CHILDREN.

