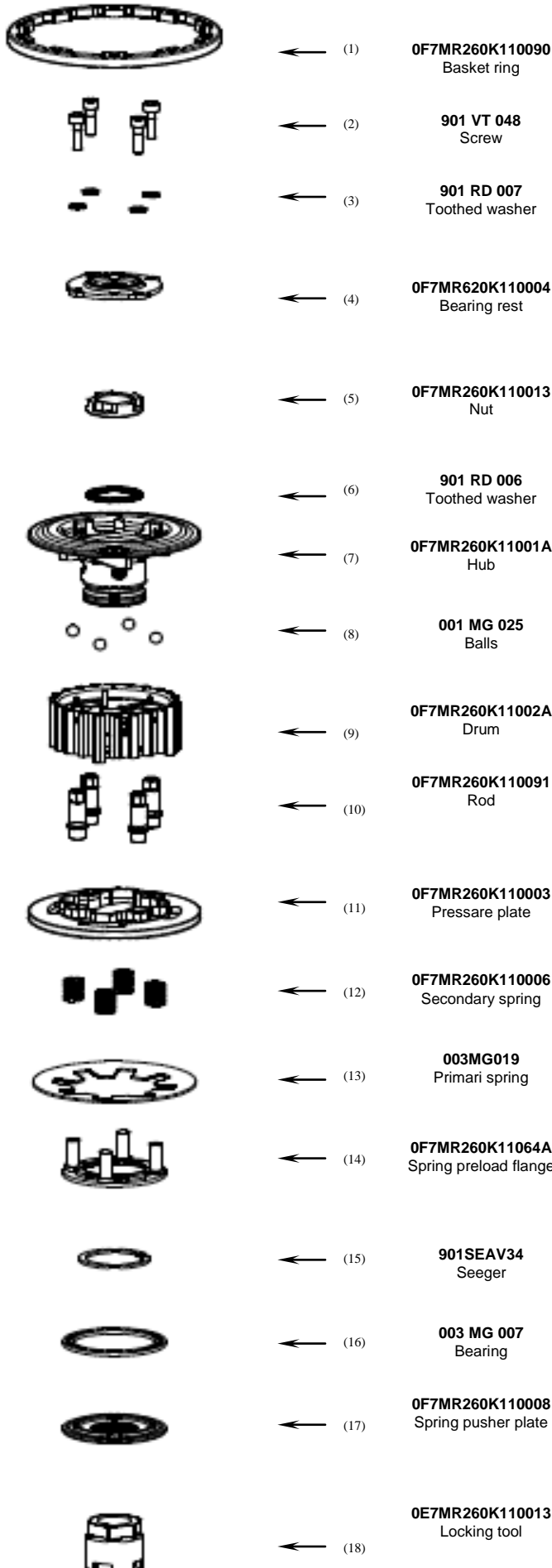


0F7MR260K110000B FHQ-M050

HUSQVARNA 449 SLIPPER CLUTCH KIT

MOUNTING INSTRUCTIONS



Remove the original clutch from its seat. Be sure to remove the original washer present on the shaft.

Place on the shaft the supplied spring pusher plate (17).

Warning: the spring pusher plate has to be placed with the seat for the bearing faced up.

Place the bearing (16) in the seat of the spring pusher plate you just placed in. Place the balls (8) at the bottom of the hub ramp using some grease to hold them in place. Pre-assemble the hub pack placing the drum on the hub at rest position being sure that the steel balls remain in their position.

Place the plate of the original clutch, starting with a friction plate (you should place 6 friction plates and 5 steel plates). You should use one steel plate less than the original clutch plate set.

Place the friction plate so that the parts where the plate internal teeth are missing do not match with the most prominent teeth of the clutch hub.

Place the pressure plate (11) with the rods (10) mounted on it, in its seat in the drum.

Place on the spring preload flange (14) keeping with the four pins faced up, the primary spring, with the concave faced up, and the secondary spring on the spring preload flange pins.

Place this group of components on the pressure plate and be sure that the secondary springs are correctly placed in their seats in the pressure plate and in the drum.

Place the seeger (15) in its seat in the clutch hub, so that the entire group is blocked.

Mount the STM clutch on the primary shaft. Align the steel plates on the plates seats of the basket.

Place the washer (6) with the convex part faced up.

Lock the nut (5) on the drive shaft. To screw the nut use the stm tool (18) provided with the clutch, locking with a dynamometric wrench to the torque suggested by the manufacturer. To lock the pressure plate (11) we suggest to use the specific tool (UTL-0080), not supplied with the clutch.

Place the bearing rest (4) on the rods. The seat for the bearing should remain faced up.

Tight the bearing rest with the four screw (2) together with the washers (3).

Place the clutch basket ring (1) included in the kit on the OEM basket and block the ring with the OEM screws.

Place the OEM bearing in its seat in the bearing rest and place the OEM pushrod pins.

Once the assembly is completed, repeatedly operate the clutch lever to check that pressure plate correctly performs the opening and closing movements.

If necessary adjust the lever play.

GENERAL SAFETY REGULATIONS

- IN THIS SHEET ARE REPORTED THE DIRECTIONS TO PERFORM CORRECTLY THE CLUTCH ASSEMBLY OPERATIONS.
- STM RESERVES THE RIGHT, WITHOUT NOTICE, TO INTRODUCE ANY TECHNICAL CHANGE WHENEVER DEEMED IT TO BE NECESSARY TO IMPROVE FUNCTION AND QUALITY OF THE PRODUCTS.
- ASSEMBLY OPERATIONS MUST BE PERFORMED BY A SKILLED TECHNICIAN AND MUST BE SCRUPULOUSLY OBSERVED.
- BEFORE MOUNTING THE CLUTCH MAKE A COMPLETE INSPECTION OF THE MOTORBIKE COMPONENTS, IN ORDER TO VERIFY THE POSSIBLE PRESENCE OF FAULTS OR ANOMALIES ON THE VEHICLE.
- MAKE SURE THAT THERE ARE NO MISSING/DAMAGED PARTS IN THE CLUTCH KIT.
- SOME PARTS OF THE CLUTCH AND ITS COMPONENTS CAN HAVE SHARP SURFACE: HANDLE WITH CARE.
- SOME COMPONENTS OF THE CLUTCH, BECAUSE OF THEIR SMALL DIMENSIONS CAN BE SWALLOWED; KEEP AWAY FROM CHILDREN.

