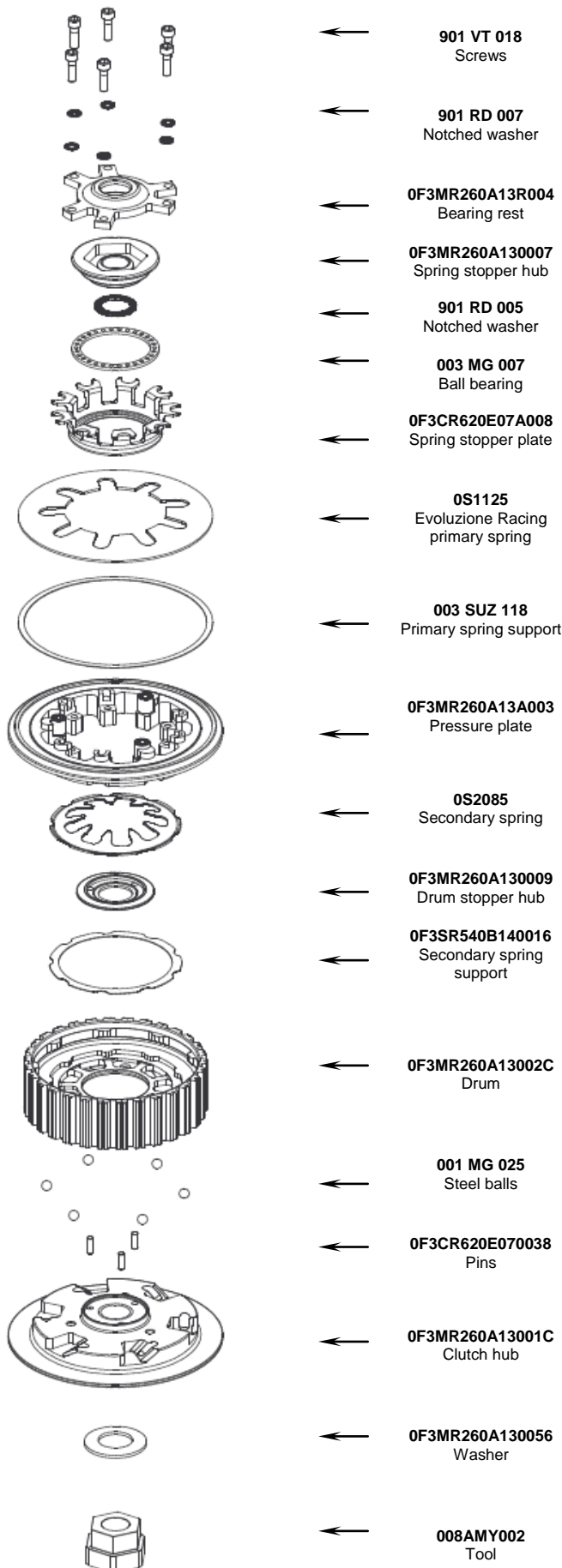


# OF3MR260A130000

# EVOLUZIONE SLIPPER CLUTCH FOR HUSQVARNA 570

## ASSEMBLY INSTRUCTIONS



- Pre-assemble the hub pack: place the 6 steel balls (001MG025) at the bottom of the grooves of the hub (OF3MR260A13001C) using a small amount of grease. With an M6 screw fix the drum (OF3MR260A13002C) onto the hub (OF3MR260A13001C) in an at-rest position.
- Insert the washer (OF3MR260A130056) and the hub pack onto the main shaft. Reinstall the clutch plates remembering to respect the position as in the original clutch. The total thickness of the disc pack should be 35.2 mm. Attention: in the original plates kit there are two rings (one of them is conical), they should not be assembled into the plates kit when installing the STM clutch.
- Remove the previously mounted screw.
- Position the drum stopper hub (OF3MR260A130009) on the hub (OF3MR260A13001C) with a small quantity of grease, taking care to align the three holes with the three pins (OF3CR620E070038) inserted in the hub (OF3CR320I1101A3). Then check that the pins (OF3CR620E070038) do not stick out from the surface where the spring stopper hub (OF3CR320I110007) will be placed. Attention: the side of the pins that must come out from the hub, and that must be visible, is the flat one (the rounded side must be inside the hub hole).
- Insert the notched washer (901RD005) in the upper part of the drum stopper hub (OF3MR260A130009), the convex part facing up.
- Place the secondary spring support (OF3SR540B140016) in the drum housing (OF3MR260A13002C).
- Using a little quantity of grease mount the secondary spring (OS2085) in its own housing inside the drum (OF3MR260A13002C).
- Insert the pressure plate (OF3MR260A13A003) in the drum (OF3MR260A13002C), position the primary spring support (003SUZ118) inside the pressure plate (OF3MR260A13A003) and fit the Evoluzione Racing spring (OS1125).
- Insert the spring stopper washer (OF3CR620E07A008) inside the spring (OS1125) keeping the shaped part facing up as illustrated and making the 9 wings overlap the 9 spring tips (OS1125); fit the ball bearing (003MG007) and finally the spring stopper hub (OF3MR260A130007).
- Screw the spring stopper hub onto the drive shaft, locking with the dynamometric key to the torque suggested by the manufacturer. For the assembly please use the tool (008AMY002) supplied with the clutch, and to block the pressure plate (OF3SR230C220003) we suggest to use the specific tool (UTL-0030) not supplied with the clutch.
- Pre-assemble the complete bearing rest: mount the clutch pushrod piece, bearing and thrust washer of the original clutch into the bearing rest housing (OF3MR260A13R004).
- Position the bearing rest (OF3MR260A13R004) into the relevant opening of the pressure plate (OF3MR260A130003) taking care to correctly align to the openings and fix it with the six screws (901VT018) and with the notched washers (901RD007).

**NB: once the assembly is completed, repeatedly operate the clutch lever to check that pressure plate correctly performs the opening and closing movements, then mount the clutch guard.**

### NORME DI SICUREZZA GENERALI

- IL PRESENTE FOGLIO CONTIENE LE ISTRUZIONI PER ESEGUIRE CORRETTAMENTE LE PRINCIPALI OPERAZIONI DI INSTALLAZIONE DELLA FRIZIONE.
- LA STM. SI RISERVA IL DIRITTO DI APPORTARE MODIFICHE IN QUALSIASI MOMENTO AL PRODOTTO SENZA ALCUN OBBLIGO DI AGGIORNAMENTO.
- LE OPERAZIONI DI MONTAGGIO DEVONO ESSERE SCRUPOLOSAMENTE OSSERVATE ED ESEGUITE ESCLUSIVAMENTE DA UN TECNICO SPECIALIZZATO.
- PRIMA DI INSTALLARE LA FRIZIONE ESEGUIRE UN CONTROLLO PER VERIFICARE L'EVENTUALE PRESENZA DI GUASTI O ANOMALIE SUL VEICOLO
- ACCERTARSI CHE NON CI SIANO PARTI MANCANTI O DANNEGGIATE NELLA CONFEZIONE.
- ALCUNE PARTI DELLA FRIZIONE E DEI SUOI COMPONENTI POSSONO PRESENTARE SUPERFICI TAGLIANTI: MANEGGIARE CON ATTENZIONE.
- ALCUNI COMPONENTI DELLA FRIZIONE PER LE LORO PICCOLE DIMENSIONI POTREBBERO ESSERE INGERITI: TENERE LONTANO DALLA PORTATA DEI BAMBINI



STRADA srl

Via Campo Archero 20  
Tel +39 011 9422832  
Internet: www.stm.to.it

10023 Chieri ( TO )  
Fax +39 011 9471447  
E-mail: strada@stm.to.it