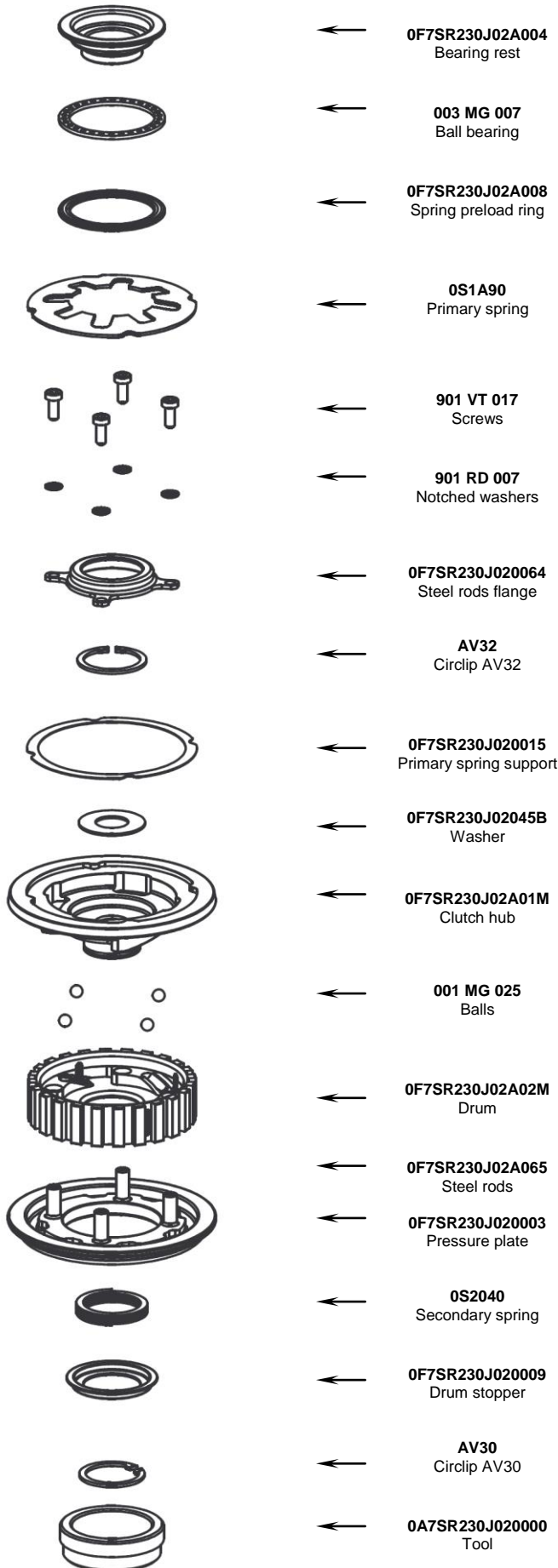


0F7SR230J020000 - FHM S100

HONDA NSF 100 SLIPPER CLUTCH KIT

INSTALLATION INSTRUCTIONS



The slipper system group, made up of:

- hub (0F7SR230J02A01M);
- balls (001 MG 025);
- drum (0F7SR230J02A02M);
- secondary spring (0S2040);
- drum stopper (0F7SR230J020009);
- circlip (AV30)

is supplied as already assembled (see Fig.1).

In case of need to replace the secondary spring (0S2040) or to make a ramp condition inspection, see below the Slipper System Un-install Procedure. Install the plates of the original clutch on the slipper system group, keeping the same sequence and face orientation of each plate. Total height of the plates kit should be 16.8mm ± 0.2mm.

Align the teeth of the friction plates, in order to prepare them for an easy insertion into the outer basket during the following installation step.

Position the pressure plate (0F7SR230J020003) on the plates kit.

Insert the group obtained on the gear shaft (Fig.2).

ATTENTION: between the outer basket and the hub (0F7SR230J02A01M) must be kept the same washer used with the original clutch. It'll be necessary to rotate the gear shaft to find the most correct position in order to align at the same time:

- the gear shaft spline with the one on the hub (0F7SR230J02A01M);
- the outer basket teeth housings with the friction plates teeth;

Lock the group on the gear shaft with the original circlip.

If the gap between the original circlip and the hub (0F7SR230J02A01M) surface is big enough, insert the washer (0F7SR230J02045B), which is supplied anyway. If there's not enough space don't install the washer (0F7SR230J02045B) and keep it as a spare.

The preload group, made up of:

- bearing rest (0F7SR230J02A004)
- ball bearing (003 MG 007)
- spring preload ring (0F7SR230J02A008)
- primary spring (0S1A90)
- steel rods flange (0F7SR230J020064)
- circlip (AV32)

is supplied as already assembled (see Fig.3). In case of need, in order to un-install the parts, just extract the circlip(AV32) using a pair of pliers.

Insert the bearing and the pushrod pin of the original clutch into the bearing rest (0F7SR230J02A004).

Verify that the primary spring support (0F7SR230J020015) is correctly inserted into the housing on the hub (0F7SR230J02A01M).

Position the preload group on the hub (0F7SR230J02A01M) verifying the correct insertion of the primary spring (0S1A90) into the housing on the hub (0F7SR230J02A01M).

Fix the preload group with the four screws (901VT017) and notched washers (901RD007), after having aligned the holes of the steel rods flange (0F7SR230J020064) with the ones of the steel rods (0F7SR230J020064).

Once the assembly is completed, mount the clutch guard, and then repeatedly operate the clutch lever to check that the pressure plate correctly performs the opening and closing movements. In case of frequent un-install operations, check the steel rods tightening condition on the pressure plate.

SLIPPER SYSTEM UN-INSTALL PROCEDURE

It's necessary to extract the circlip (AV30), which is used to join the parts in a group

preloading the secondary spring (0S2040). We suggest to use the tool (0A7SR230J020000) supplied in the box together with the pressure plate

(0F7SR230J020003) (Fig.5) in order to push on the drum stopper (0F7SR230J020009) until it'll be easy to remove the circlip (AV30) with a pair of pliers. **PAY ATTENTION WHILE EXECUTING THIS OPERATION**, asking for help from a second person or using other workbench tools.

Before performing the re-installation, control the 4 balls (001MG025) to be correctly positioned at the bottom of the grooves on the hub (0F7SR230J02A01M), using a small amount of grease, then remount the drum (0F7SR230J02A02M) on the hub (0F7SR230J02A01M) in a at-rest position. Then remount secondary spring (0S2040), drum stopper (0F7SR230J020009) and circlip (AV30).

GENERAL SAFETY REGULATIONS

- IN THIS SHEET ARE REPORTED THE DIRECTIONS TO PERFORM CORRECTLY THE CLUTCH ASSEMBLY OPERATIONS.
- STM RESERVES THE RIGHT, WITHOUT NOTICE, TO INTRODUCE ANY TECHNICAL CHANGE WHENEVER DEEMED IT TO BE NECESSARY TO IMPROVE FUNCTION AND QUALITY OF THE PRODUCTS.
- ASSEMBLY OPERATIONS MUST BE PERFORMED BY A SKILLED TECHNICIAN AND MUST BE SCRUPULOUSLY OBSERVED.
- BEFORE MOUNTING THE CLUTCH MAKE A COMPLETE INSPECTION OF THE MOTORBIKE COMPONENTS, IN ORDER TO VERIFY THE POSSIBLE PRESENCE OF FAULTS OR ANOMALIES ON THE VEHICLE.
- MAKE SURE THAT THERE ARE NO MISSING/DAMAGED PARTS IN THE CLUTCH KIT.
- STM ITALY SRL PRODUCTS ARE EXCLUSIVELY INTENDED FOR COMPETITION ON TRACKS. NOT SUITABLE ON MOTORBIKES ON PUBLIC ROADS.
- SOME PARTS OF THE CLUTCH AND ITS COMPONENTS CAN HAVE SHARP SURFACE: HANDLE WITH CARE.
- SWALLOWED: KEEP AWAY FROM CHILDREN.

